



# GLOBAL NEWS

WINTER 2009



## *IN THIS ISSUE*

- 2 MESSAGE FROM THE PRESIDENT
- 3 RESOLUTIONS FOR 2009
- 4 SERVICE LINE UPDATES
- 6 HR AND SAFETY NEWS
- 6 NEW EMPLOYEES
- 7 BACONTON POWER FACILITY ACHIEVES  
ISO 14001 AND OHSAS 18001 CERTIFICATIONS
- 8 POWERING UP AT POWER-GEN 2008
- 10 CUTTING-EDGE TRAINING PROGRAM
- 11 HOLIDAY PARTY
- 12 TRAVEL NEWS AND MORE

# MESSAGE From the PRESIDENT

## AKIHISA TOMIOKA

PRESIDENT AND CHIEF EXECUTIVE OFFICER



It has been about 10 months since the merger between PIC and Marubeni Group. While we have encountered many challenges during this time, it has also been my great pleasure to have, and to work with, so many excellent colleagues in this company. After overcoming the difficulties created by the merger earlier in the year, 2008 was a great step to growing PIC and the entire Marubeni organization. Words cannot convey how much I appreciate the dedicated effort and high level of enthusiasm exhibited by all of you to achieve this result.

I would like to express my sincerest gratitude for the professionalism and support we have seen from PIC's employees, especially in regard to an incident at one of our Field Service sites. The thoughtful actions of our people on-site made the rescue and recovery efforts possible, while the organized efforts of our corporate employees allowed for our site team to effectively manage the situation. I take great pride in the character of our people and thank each of you for supporting us with our focus on safety. I have heard our customer was also impressed by our actions and has shown appreciation for our commitment to the facility and our work there.

Safety and Quality are always top priorities at PIC. It is important for all of us to remember that the customer's success is our success. As the current economic and market situations persist, we must strive to maintain our fundamental principles and high standards. Please continue to demonstrate PIC's honorable values, commitment to our customers and ownership toward our work. Have a happy new year and I wish you and your family good health and prosperity in 2009!

All the best,

A handwritten signature in black ink, appearing to read 'A. Tomioka'.

Akihisa Tomioka  
President and Chief Executive Officer

# RESOLUTIONS FOR 2009



Live the PIC culture and maintain the traditions.

**Ashley Kelly**  
Commercial Manager, Marietta, Ga.

Due to recent health complications from stress at a younger age, my New Year's resolution is to exercise daily and follow a nutrition plan of natural foods for a happier and healthier career and life. God Bless.

**William B. Wayne**  
Flash Developer, Marietta, Ga.

Help save the environment by doing less laundry and using more deodorant.

Anonymous



To quit smoking as my first child is due on April 23. I want to be able to play with my child for more than 20 seconds without needing oxygen.

**Danny Murray**  
Technical Advisor, Ibiza, Spain



My New Year's resolution is to be more organized.

**Jajwana Forbes**  
Accounts Payable, Marietta, Ga.

Start buying lottery tickets at a luckier store!

Anonymous



Global News is published quarterly for the employees of PIC. If you have any comments or suggestions, contact Jessica Parvin at 678-627-4127 or [jessica.parvin@picworld.com](mailto:jessica.parvin@picworld.com).

**President and CEO:**  
Akihisa Tomioka

**Chief Operating Officer:**  
Matt Runyon

**Chief Financial Officer & Treasurer:**  
Eisuke Kamide

**Executive Vice President:**  
Takashi Yoshihara

**Secretary & General Counsel:**  
Dirk Rountree

**Senior Vice President,  
Field Services:**  
Mike Hannaford

**Senior Vice President,  
Asset Management:**  
Todd Grzech

**Headquarters:**  
1165 Northchase Parkway, Suite 400  
Marietta, GA 30067  
Main line: 770-850-0100  
Fax: 770-850-2200  
[www.picworld.com](http://www.picworld.com)

**Global Offices:**  
Houston, Texas  
Lima, Peru  
Mexico City, Mexico  
Kuala Lumpur, Malaysia  
Zurich, Switzerland

## Mission

To provide our customers with the highest-quality and flexible services delivered through our People, Processes and Programs.

## Vision

To be the industry standard and most-valued, independent, global power generation services provider by exercising fairness, innovation and harmony in all of our service solutions.

## Position

At PIC, we combine our small company culture and commitment with big company resources and experience to provide the best solutions for our customers' every need.

# SERVICE LINE UPDATES



From left: Tressha White, Akihisa Tomioka, Michael Escalante, Kevin Moore, Rachel McDonald, Karl Bryan, Beverley Rodgers, Bruce Wertz

## Operations and Maintenance (O&M) Activities

PIC's O&M division held its annual plant managers' meeting this year in sunny Orlando, Fla. The two-day conference, held in conjunction with POWER-GEN 2008, brought PIC's plant managers together from projects across the United States, Peru, Haiti and Costa Rica. Attendees presented and examined each plant's major events from the past year in an effort to continually improve the safety and performance of PIC's operations.

During this meeting, "best practices" were discussed, which included fire-department interface and the ISO 14001 and OHSAS 18001 certification process being completed at the Baconton Facility. For more information, see page seven.



From left: Beverley Rodgers, Juan Suarez, Rob Pieper, Dave Meyer, Edwin Granzon, Carlos Lopez, Brian Alligood, David Marsh, Rod Mize

Other topics included on the agenda were the employee evaluation processes and utilizing plant managers as part of the PIC sales force. And, as the highlight of the meeting, plant managers received formal introductions to Akihisa Tomioka, PIC's new President and CEO, and Tressha White, the new Director of Human Resources.

## Installation and Outage Services Updates

As PIC's Outage Services business line emerges from a very busy fall, we're already looking forward to the spring '09 outage season. This past fall brought many challenges, all of which were overcome by the talented folks at PIC. Significant projects completed last fall included major boiler outages for Mississippi Power, LG&E and Progress Energy. As the largest outage project executed to date, the Mississippi Power project was completed on schedule and within budget. PIC and Mississippi Power's outage teams worked closely to create one team for this project, ensuring the timely return of their unit.

"Working with a knowledgeable and organized customer like Mississippi Power creates an opportunity to succeed," said Mike Hannaford, senior vice president, Field Services.

While much of the focus was on Mississippi Power, PIC's teams assigned to the Kentucky and Carolinas projects also did a superb job, completing all outages on time and within budget. Great job to all of the craft workers and supervisors!

The Turbine Services team maintained its normal load of work, executing projects for Pratt & Whitney, IPA, Alstom

and Entegra. With Turbine Services doing well, PIC welcomes Bob Helms to the sales team to help manage increased growth in 2009. PIC continues to establish itself as a leading gas turbine outage company in the country.

PIC's new business line, Installation Services, is performing marvelously on its two projects currently underway. The Pratt Industries project in Georgia is expected to finish up early 2009, and the Black Hills Power project in Wyoming should conclude mid-2010. Both projects have gotten off to a great start and are ahead of schedule with zero recordable injuries.

PIC is looking forward to the spring season, with several new projects recently awarded for 2009, including:

- Gas Turbine Installation – 6B Turbine and BOP Installation – Entergy, Kilaheo, La.
- Major Boiler Outage – Header Replacements – Kentucky Utilities, Burgin, Ky.
- Major Boiler Outage – Water Wall Replacement – Louisville Gas & Electric, Louisville, Ky.
- Siemens 501 AA Major Overhaul – Colombia

## Once Again, PIC Delivers Exceptional Start-Up and Commissioning

In early October, O&G, headquartered in Torrington, Conn., awarded PIC a Start-Up and Commissioning Services contract for the T.A. Watson Generating Station located in Braintree, Mass.

The configuration of the plant is a dual-fuel, simple-cycle peaking plant utilizing two Rolls Royce Trent 60 CTGs with associated Selective Catalytic Reduction (SCR) and balance of plant (BOP) components. The scope of work encompasses several service components including commissioning documentation, system turnover packages and system commissioning procedures, and actual start-up and commissioning. The contract is comprised of "Time and Material" for work performed primarily on-site, and a "Fixed Price" portion for documentation work done at PIC's corporate office in Atlanta.

This past fall brought many challenges, all of which were overcome by the talented folks at PIC.

—Brad Adams  
Business Development Manager

O&G selected PIC because of our vast experience and unique fixed-price delivery model for technical documentation. Leading the start-up activities on-site for PIC is Carl Lockhart, who has 20 years of experience in start-up and operations. Lockhart's team will consist of other PIC employees selected to be the Lead Electrical, Lead I&C and Turnover Coordinator on the project.

Join us in congratulating all that have been involved in the ongoing success of the project, which will run through late spring!



# HR AND SAFETY NEWS

## **PIC Announces Enhancements to Company Benefits**

To help meet the insurance needs of you and your family, PIC is pleased to announce enhancements to the company benefits package.

PIC will partner with Colonial Life to offer ancillary benefits including Critical Illness Insurance, Accident Insurance and Life Insurance. These benefits will be available to all employees.

Beginning the first quarter of 2009, PIC will offer a Limited Medical Plan to eligible craft, asset management and O&M employees. This benefit is provided by Century Healthcare. The plan features:

- No deductibles or copays
- Pharmacy benefits and discount card
- Access to a national PPO network

Look for more benefit communications beginning in February 2009.

## **EH&S “Resolutions”**

Each new year brings opportunities for a fresh start, a new beginning and renewed commitments to family, friends, employers and oneself.

Sitting around the hearth listening to friends and family talk about “New Year’s resolutions,” we look back on last year’s experiences and the impact they had on our lives. At some point in time, we all ask the question that begins with “What if I had...”

The second half of that question might go something like this, “[What if I had] ... more patience, taken a different route, used another word or phrase, held my temper, tried to see from another’s perspective, listened more carefully and so on ...”

The list could go on for miles. Our lives are shaped by the choices we make. Our attitudes are driven by our reactions to life’s ups and downs. Life is a learning process, and we grow with every failure and success.

You don’t have to wait for a new year to roll around to make a new commitment or start a fresh beginning. The opportunity is always there, always yours, every minute of every day.

This year, renew your commitment to work safely every day. Think of those that count on you. When you stop and count your reasons for being safe, you’ll realize there are many!

Wishing you all safety, well-being and prosperity in 2009.

Beverley C. Rodgers  
EH&S, Corporate Manager

## WELCOME

We’d like to extend a special welcome to PIC’s new corporate employees. We’re excited to have you as part of our team!

ROBERT HELMS

DAWN GEHRING

KARL BRYAN

PAULA YEPES

TRESSHA WHITE

HENRY LARD

CHAD ESLIN

JESSICA PARVIN



## **In remembrance ...**

The PIC community recently suffered the loss of Hector Hidalgo, a valued employee and cherished PIC family member. Hector was involved in a tragic motorcycle accident in the Aguaytia area of Peru. This unexpected loss is particularly difficult for the rest of the Aguaytia team. Our thoughts are with them and Hector’s family during this difficult time.



## BACONTON POWER FACILITY ACHIEVES ISO 14001 AND OHSAS 18001 CERTIFICATIONS

**P**IC's management team is proud to announce the Baconton power facility completed certification in both the ISO 14001 Environmental Standard and OHSAS 18001 Occupational Health and Safety Standard. The Baconton team, led by plant manager Brian Alligood, and supported by PIC's corporate management team, finalized the certification process on Jan. 6, 2009 with a passing score on the Stage 2 Audit.

There are many benefits associated with ISO certification. Although the Integrated Environmental Health and Safety (EH&S) Management System is a voluntary management tool, ISO certification has become a requirement for doing business in some countries. The international business community developed the Integrated EH&S Management System to provide companies with methodically structured and disciplined control of all aspects of their environmental, occupational, health and safety impacts. The management system also helps companies reduce risk and liability, control costs, increase stockholder confidence and expand global marketing.

Please join us in celebrating the tremendous amount of effort expended in achieving this significant goal.

### **History of SOWEGA and Baconton Power Facilities**

The SOWEGA and Baconton gas turbine power plants, located in Baconton, Ga., were completed in 2000 and house two separate power plant operations. SOWEGA Power

LLC is a 98MW, (2 x 49MW nominal summer rating) dual-fuel (natural gas and distillate fuel), gas turbine electric-generating plant. SOWEGA utilizes two General Electric LM6000 PC combustion turbine-generator sets that are equipped with enhanced 'SPRINT' for power augmentation. The plant has been commercial since June 1999. Baconton Power LLC is a 194MW (4 x 48.5MW nominal summer rating) dual-fuel, gas turbine generating plant that utilizes two General Electric LM6000 PC combustion turbine-generator sets and two General Electric LM6000 PA sets upgraded to LM6000 PC sets. All four units are equipped with 'SPRINT' for power augmentation. Three of the four GE LM6000 gas turbines (Units 100, 400 and 500) moved from the Ave Fenix power plant located in Tucuman, Argentina to Baconton where they were upgraded from 50 to 60 hertz units. The plant has been commercial since June 2000.



Unit 600 Baconton Power Plant, Mitchell County, Georgia





PIC Group, Inc.

Global Power Generation Service Provider

PIC  
Marubeni Group

Integrate Technolog

Project Site Services

A Global

PIC Group, Inc. has been recognized for  
over 20 years as a leader in the  
power industry. PIC has  
received numerous awards for  
excellence in service.



## POWERING UP AT POWER-GEN 2008

With size and commotion comparable to Times Square on New Year's Eve, businesses and registrants from around the world gathered for what is said to be the biggest, best and strongest trade show in the power generation industry. On Dec. 2-4, 2008, PIC participated for the 20th time, and for the event's 20th anniversary, at POWER-GEN International hosted by PennWell® at the Orange County Convention Center in Orlando, Fla.

This year, PIC was one of more than 1,200 businesses on the world's largest industry exhibit floor to showcase its service expertise in the power industry. Present among 19 thousand attendees from 76 countries representing many diverse elements associated with power generation, PIC's team was there to teach, learn and discuss the latest industry trends with the brightest minds in the industry.

"POWER-GEN's record breaking attendance proves that the power generation industry is going strong," said Brad Adams, business development manager. "It's exciting to see what companies are doing, and what new companies are emerging in the market. This year went even better than expected."

Each year, POWER-GEN serves as a vehicle for current and potential customers to learn more about PIC's services. For POWER-GEN 2008, these services included the newly re-structured lines of Installation Services, Outage Services, Start-Up and Commissioning, Operations and Maintenance, Documentation and Training, and Project Support Services. In addition to these services, PIC's exhibit featured vivid graphics, twin 10-foot logos, squeaking rubber ducks and an excited team.

Another highlight, making the 2008 event different than previous years, was the introduction of PIC as a wholly owned subsidiary of Marubeni Corporation. While PIC's logo may have changed, it continues to offer the same

"world-class" personnel, services, programs and solutions to the power generation industry.

"Overall, our customers were pleased to see PIC offering the same great customer service and commitment to the industry that they are used to," explained Todd Grzech, senior vice president, Asset Management. "However, I did notice people were responding favorably to the merger, viewing it as a strengthening of PIC. Our knowledge and expertise are now reinforced by Marubeni's strong portfolio, global reach and extensive financial resources."

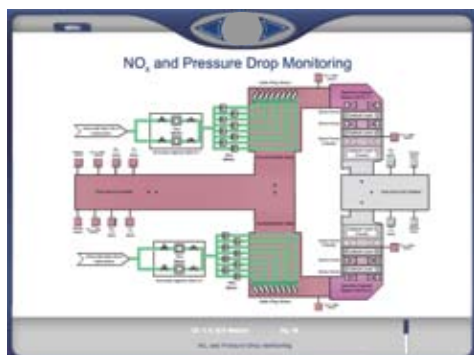
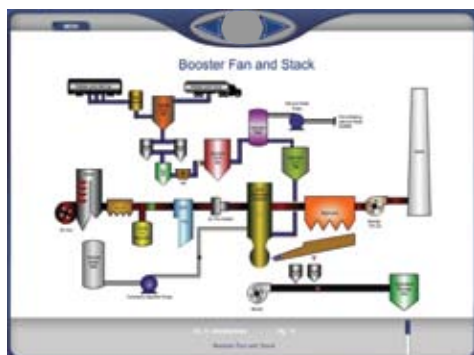
Not only is POWER-GEN a venue for learning, it's an opportunity for PIC's team to develop new business relationships and strengthen existing ones. With leadership and employees present from each of PIC's service lines, the team tirelessly staffed the exhibit and looked for opportunities to capitalize on each current or prospective customer who entered.

"It looked like there was a lot of business being done," said Bruce Wertz, director, O&M Services. "We had a good location and the majority of the time there were quite a few people in PIC's booth. For the O&M service line, POWER-GEN primarily serves as a venue to meet with many of our existing clients, but there were also a handful of new potential contacts this year."

All in all, POWER-GEN 2008 was a success for PIC. Successful for the brand as the company, once more, stood out among the rest, and successful for each of the service lines as new contacts were generated. Between the daily activities and the evening networking functions, PIC's team was well represented throughout the three-day show. As a leader in the power generation industry, PIC's presence at POWER-GEN International is key, and that's why PIC's team is already gearing up for the 2009 event taking place in Las Vegas. Double down, we're Vegas bound!



# PIC DEVELOPS CUTTING-EDGE TRAINING PROGRAM



**Check Your Knowledge**

What is the capacity of the Pebble Lime storage silo?

- a. 50,000 lbs
- b. 14 Days
- c. 25 Tons

Incorrect  
Please Try Again

## Background

Recently, PIC collaborated with major players within the power industry to create a computer animated Air Quality Control System (AQCS) Training Program. The program is specifically developed for power plants and is tailored to their particular emissions design.

There are three different technologies that make up an AQCS: Selective Catalytic Reduction (SCR), Circulating Dry Flue Gas Desulfurization (DFGD) or Wet Dry Flue Gas Desulfurization (WFGD) and Baghouse. These technologies are designed to remove and process undesired compounds and substances that form in flue gas when coal is burned in the boiler at the plant.

The AQCS controls SO<sub>2</sub>, NO<sub>x</sub>, and Mercury stack emissions. A reduction in these emissions reduces the presence of air particles that can pose serious health risks to the elderly as well as individuals suffering from asthma, heart and lung disease. The driving force behind the authorization of the AQCS project was the 2005 Clean Air Interstate Rule, issued by the Environmental Protection Agency (EPA) and finalized by the Bush Administration. The rule represents the greatest emissions cuts in more than a decade and went into effect Jan. 1, 2009.

## AQCS Projects

PIC is one of the first companies to introduce computer animation to the power generation industry. In 2008, PIC successfully introduced AQCS Animated Training Programs to clients who welcomed the technology with open arms. To date, PIC has developed several AQCS Animated Training Programs with additional projects scheduled for completion in 2009.

## Closer look at Animation

The AQCS Animated Training Program utilizes Adobe Flash Player in conjunction with several other embedded resources such as PowerPoint slides, images, Visio drawings, audio files, XML, video and interactive quizzes. The program allows users to access separate chapters that represent each system and sub-system found in an AQCS. Users are also encouraged to review the overview chapters that explain how the sub-systems tie together. With an emphasis on enhancing the viewer's learning experience, each chapter consists of technical explanations, images, animated drawings and a text box for the hearing-impaired.

# WE ATE, DRANK AND WERE VERY MERRY!

While the weather outside was frightful – so, it wasn't really that bad, just a bit cold – the party inside was delightful! At PIC's 2008 annual holiday bash, hosted at the Point of View lounge, more than 100 corporate employees, field personnel and guests jingled and mingled the night away.

The Point of View, located on the 28th floor of the Atlanta Hilton Downtown, is known for its delicious food, classic cocktails and glittering view of downtown Atlanta. Surrounded by floor-to-ceiling windows, the star-studded soiree sparkled like the city skyline. Guests at the roof-top reception enjoyed mouth-watering appetizers, hand-carved meats and a sweet dessert table while DJ Michael Blair provided the perfect dance mix. Although we may not have seen Santa and his sleigh passing by, everyone still had a great time.

All the PIC employees would like to extend a huge THANKS to the PIC Boosters Committee for organizing such a great event. Special thanks to Charity Garret, Julia Carpenter, Barb Auman, Rachel McDonald and Laurie Zeaser for their help with the event.



Takashi Yoshihara



Laurie Zeaser and Kristi Lewis



Dancing



Amanda Hemby, Timoree Bauer, Liz Mullinax, Erin Clarke



Brad Adams, Johnette Adams, Matt Runyon, Jo Runyon



Dessert Table



# TRAVEL NEWS

## DID YOU KNOW ...

- The Bureau of Consular Affairs Web site is a great resource for information on everything from passports and visas to travel advisories, warnings and alerts. To find out more, visit [www.travel.state.gov](http://www.travel.state.gov).

## AIRLINE NEWS ...

- Continental Airlines plans to retire 30 Boeing 737s while adding just 19 new planes.
- Delta Air Lines plans to cut domestic and international capacity this year amid slowing demand for travel attributed to the global financial crisis. A Delta spokeswoman said the company still intends to begin 15 new international routes in the spring.
- Beginning Jan. 1, 2009, Delta will now allow travelers to qualify for Elite status by flying a certain number of segments, even if they have not earned the amount of miles previously required for the designation. The new policy, adopted from Northwest Airlines, would enable passengers on a single flight to receive credit for multiple segments if there is a stop in between their destination.
- In an effort to weather the economic storm, British Airways and Qantas are discussing a possible merger.
- Lufthansa's supervisory board approved OelAG's acquisition of a 41.6 percent stake in Austrian Air lines. OelAG is Austria's privatization agency. The takeover, which is subject to regulatory approval as well as approval from OelAG's supervisory board, gives one of the largest airlines in Europe more routes. To complete the deal, the Austrian government will provide €500 million in restructuring aid, pending approval from the European Union.
- In the ATA Airlines bankruptcy case, a judge ruled that Southwest Airlines will be allowed to purchase 14 slots at New York's LaGuardia Airport. The deal, valued at \$7.5 million, will allow the discount carrier to operate seven daily flights, pending a decision by the Port Authority on Southwest's request for a single gate at the busy airport. Corporate travel buyers' hopes have been raised that Southwest Airlines' likely debut at LaGuardia Airport will drive down fares in the New York City market.
- Swiss International Air Lines Ltd. announced enhancements to its Business Class seating, including a unique seat cushion made with air technology that not only saves the airline money on fuel by cutting down on weight but also is adjustable for passengers. Additional Business Class changes include upgraded amenity kits, lie-flat beds and extra cabin room.

## OH, BABIES!

THE NEWEST ADDITIONS TO THE PIC FAMILY



KOBY KATHERINE WILSON

Daughter of David and Sherry Wilson. Born on Nov. 8, 2008 weighing 6 pounds, 5 ounces and measuring 19 inches in length.



CASEN MICHAEL ADAMS

Son of Brad and Johnette Adams. Born on Jan. 1, 2009 weighing 7.12 pounds and measuring 19 inches in length.



RYO KEVIN TOMIOKA

Son of Akihisa and Kiyoko Tomioka. Born on Jan. 17, 2009 weighing 7.13 pounds and measuring 20.25 inches in length.